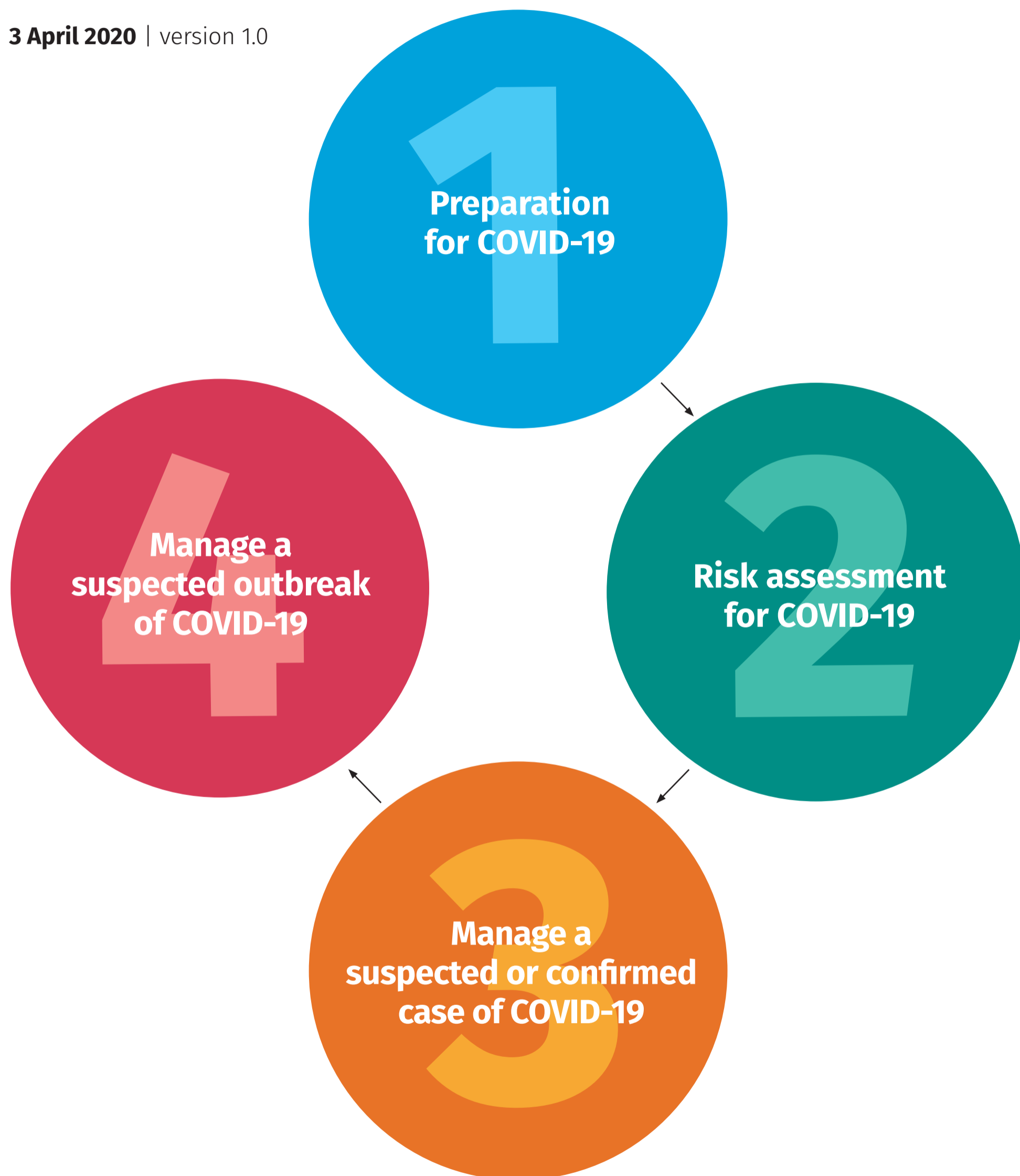


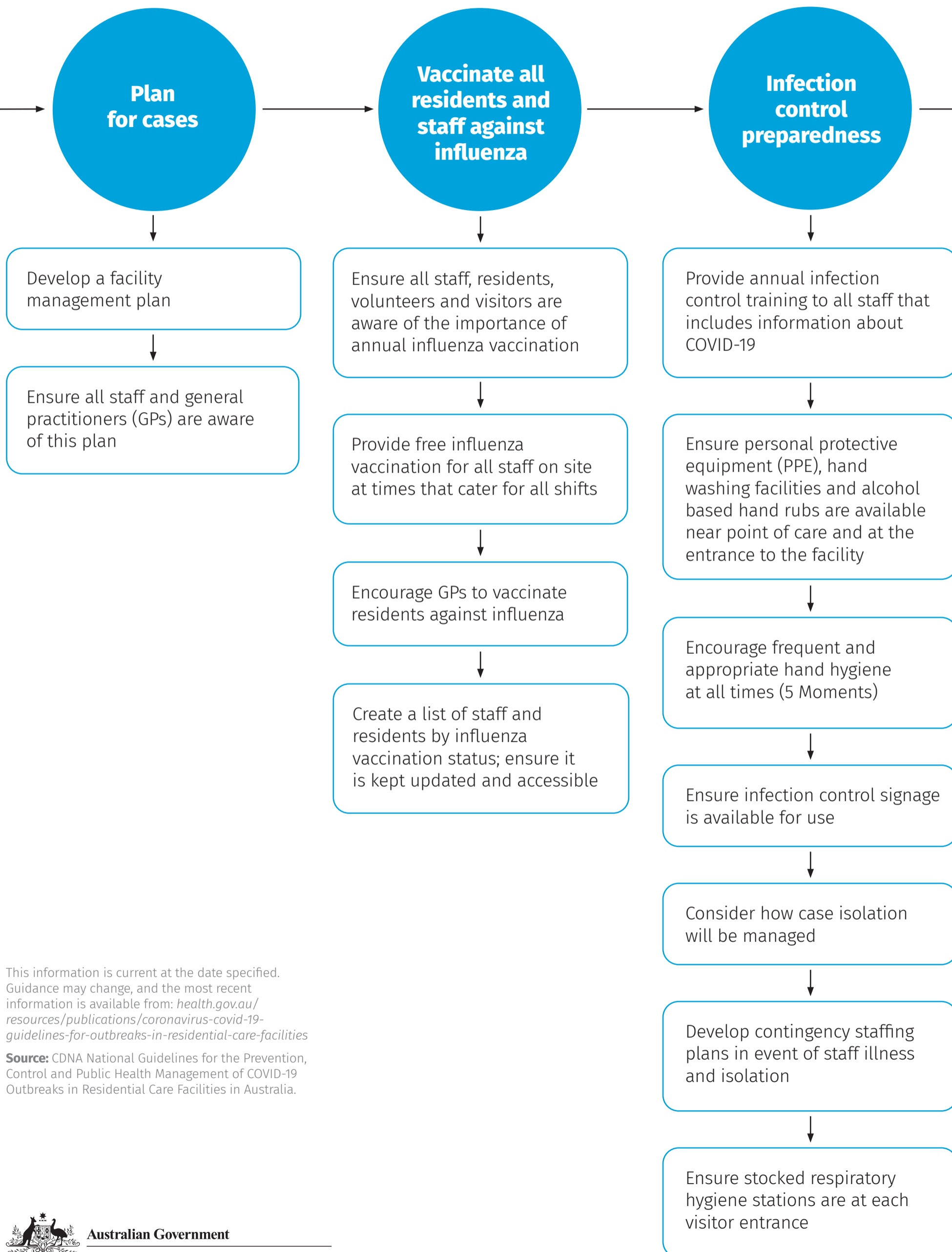
COVID-19 management flow chart

3 April 2020 | version 1.0



1. COVID-19 management flow chart

Preparation for COVID-19



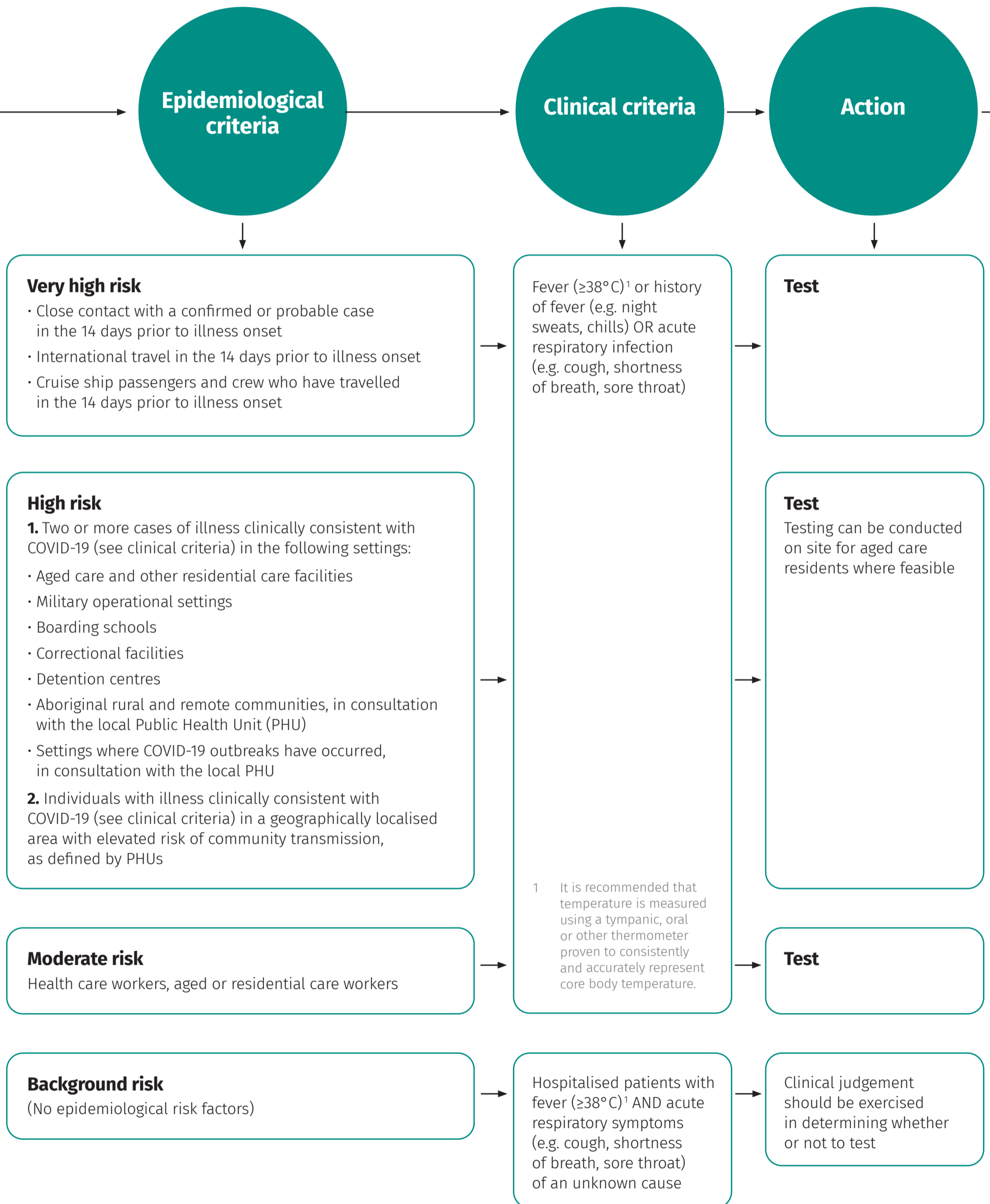
This information is current at the date specified. Guidance may change, and the most recent information is available from: [health.gov.au/resources/publications/coronavirus-covid-19-guidelines-for-outbreaks-in-residential-care-facilities](https://www.health.gov.au/resources/publications/coronavirus-covid-19-guidelines-for-outbreaks-in-residential-care-facilities)

Source: CDNA National Guidelines for the Prevention, Control and Public Health Management of COVID-19 Outbreaks in Residential Care Facilities in Australia.



2. COVID-19 management flow chart

Risk assessment for COVID-19

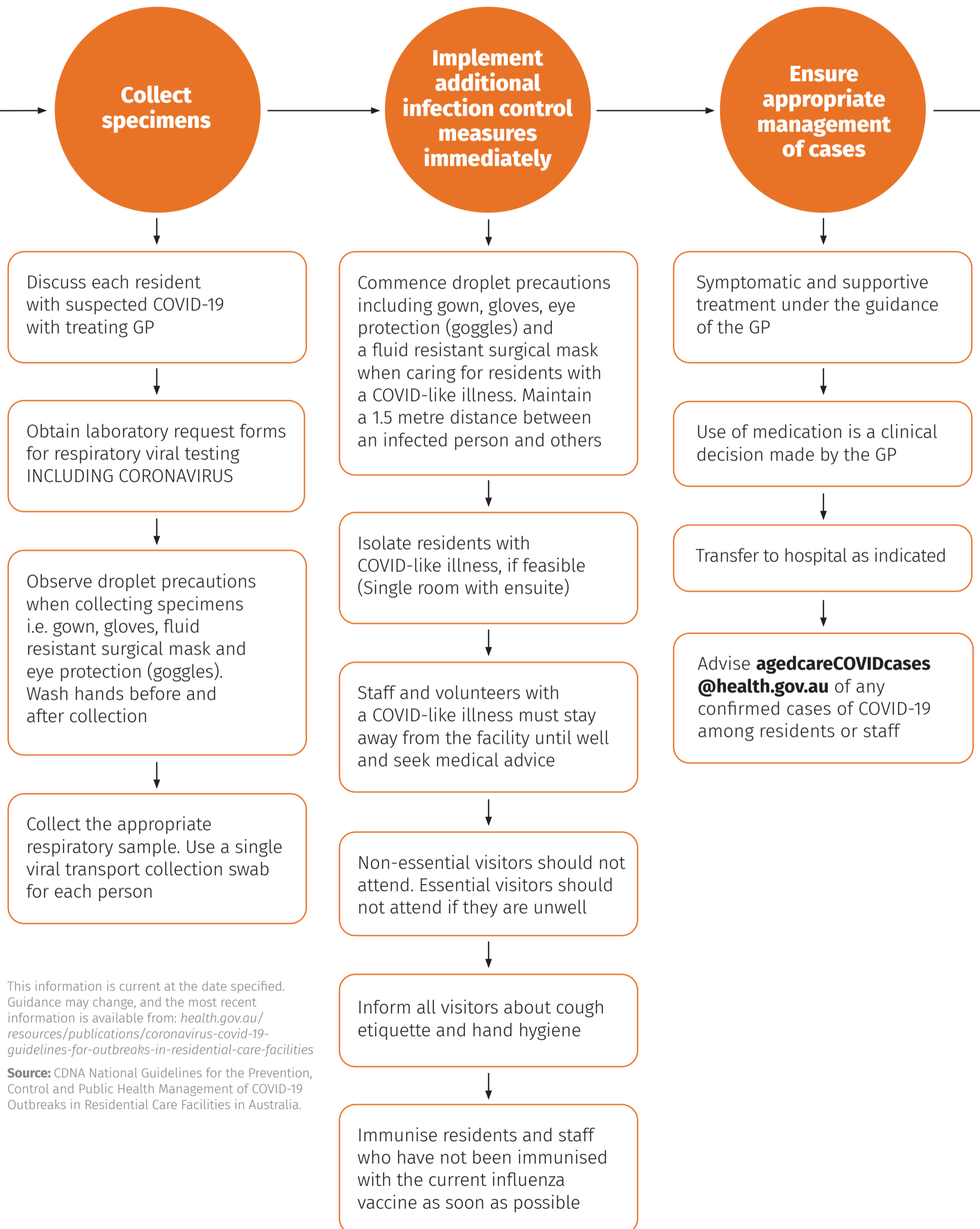


Note: Testing household contacts of confirmed or probable cases of COVID-19 (who have fever $\geq 38^{\circ}\text{C}$ or history of fever; e.g. night sweats, chills; OR acute respiratory infection; e.g. cough, shortness of breath, sore throat) may not be indicated where resources are constrained. These cases should be managed as 'probable cases'. Visit: www1.health.gov.au/internet/main/publishing.nsf/Content/cdna-song-novel-coronavirus.htm for further information.

This information is current at the date specified. Guidance may change, and the most recent information is available from: health.gov.au/resources/publications/coronavirus-covid-19-guidelines-for-outbreaks-in-residential-care-facilities
Source: CDNA National Guidelines for the Prevention, Control and Public Health Management of COVID-19 Outbreaks in Residential Care Facilities in Australia.

3. COVID-19 management flow chart

Manage a suspected or confirmed case



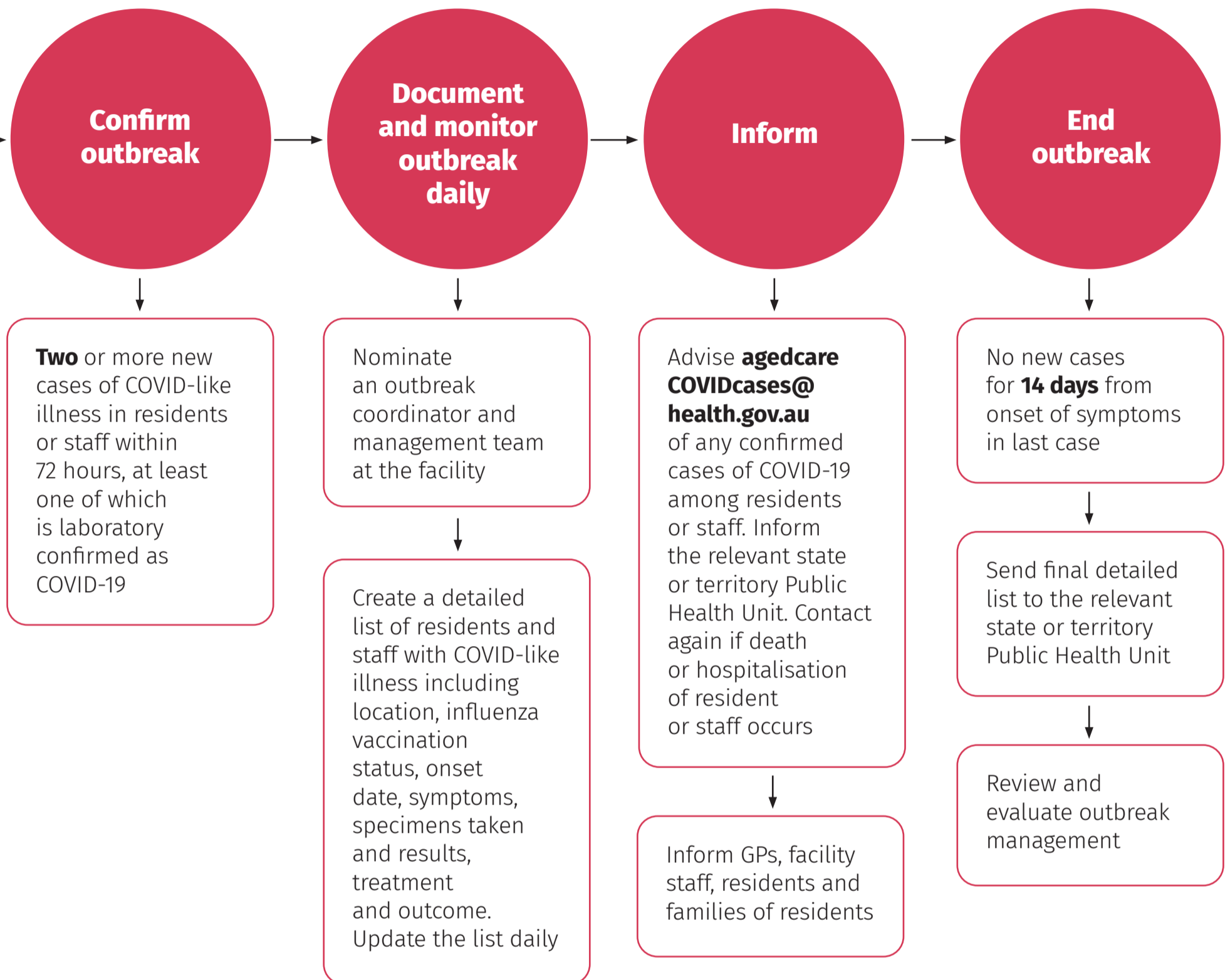
This information is current at the date specified. Guidance may change, and the most recent information is available from: [health.gov.au/resources/publications/coronavirus-covid-19-guidelines-for-outbreaks-in-residential-care-facilities](https://www.health.gov.au/resources/publications/coronavirus-covid-19-guidelines-for-outbreaks-in-residential-care-facilities)

Source: CDNA National Guidelines for the Prevention, Control and Public Health Management of COVID-19 Outbreaks in Residential Care Facilities in Australia.



4. COVID-19 management flow chart

Manage a suspected outbreak



This information is current at the date specified. Guidance may change, and the most recent information is available from: [health.gov.au/resources/publications/coronavirus-covid-19-guidelines-for-outbreaks-in-residential-care-facilities](https://www.health.gov.au/resources/publications/coronavirus-covid-19-guidelines-for-outbreaks-in-residential-care-facilities)

Source: CDNA National Guidelines for the Prevention, Control and Public Health Management of COVID-19 Outbreaks in Residential Care Facilities in Australia.

