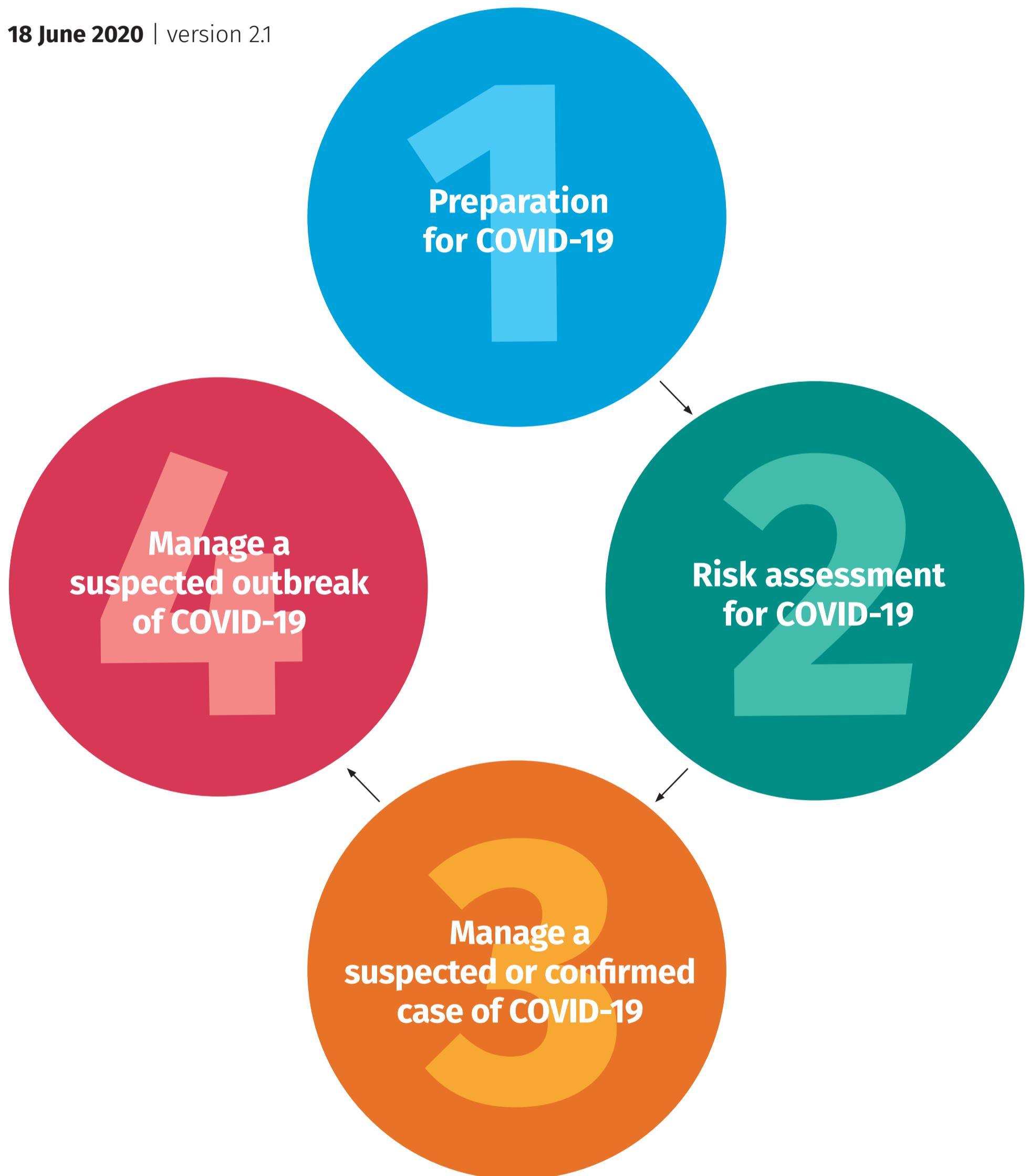


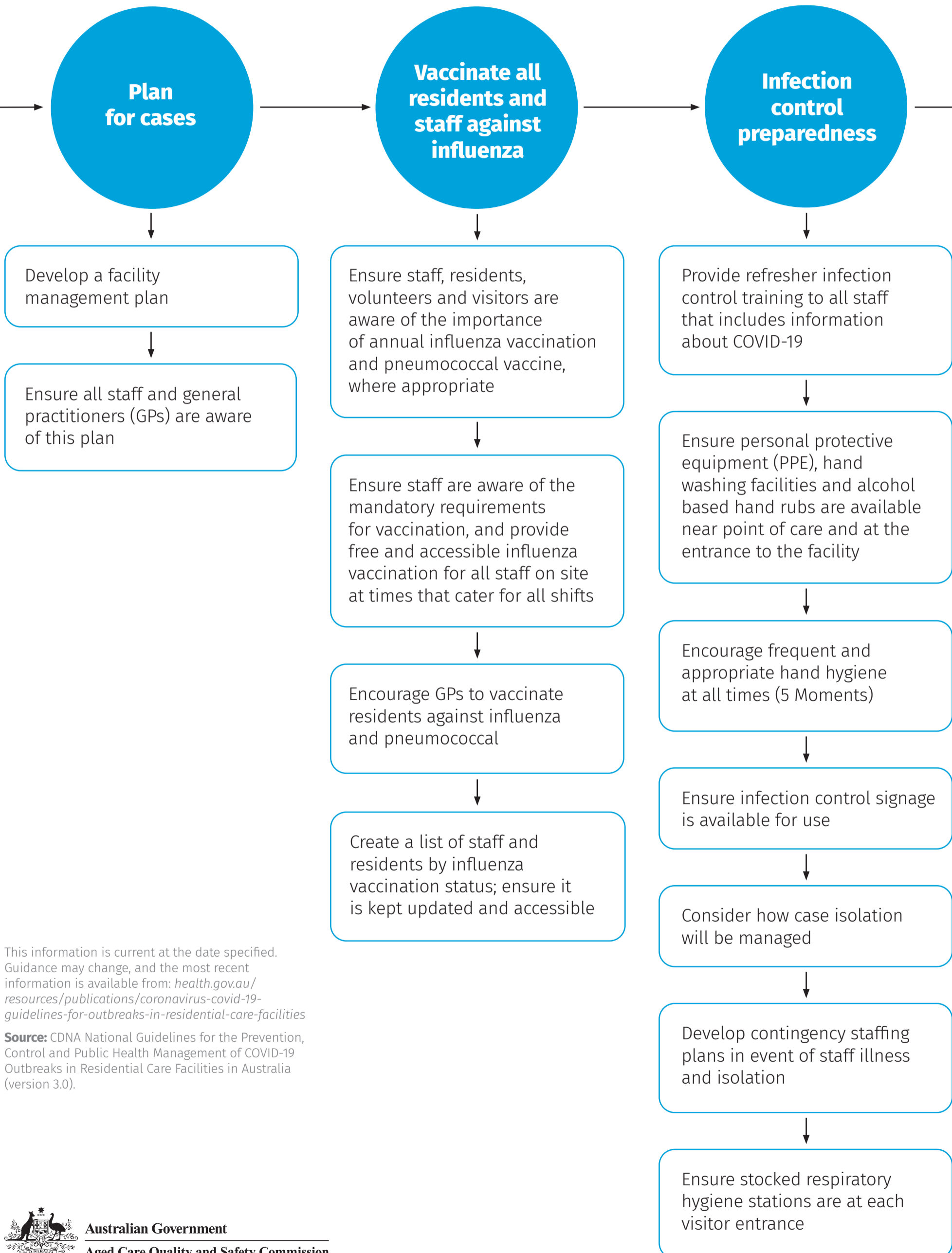
COVID-19 management flow chart

18 June 2020 | version 2.1



1. COVID-19 management flow chart

Preparation for COVID-19

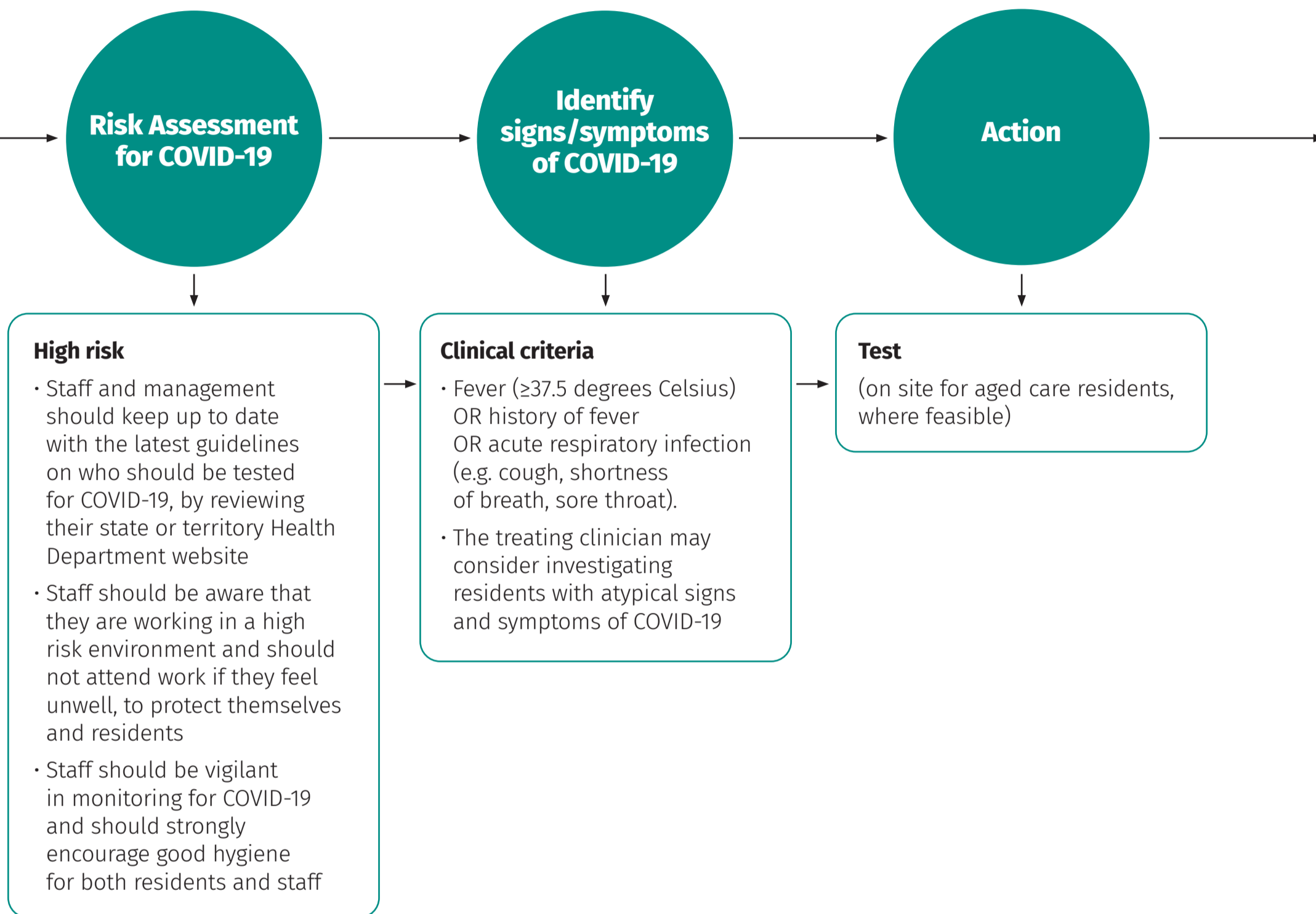


This information is current at the date specified. Guidance may change, and the most recent information is available from: [health.gov.au/resources/publications/coronavirus-covid-19-guidelines-for-outbreaks-in-residential-care-facilities](https://www.health.gov.au/resources/publications/coronavirus-covid-19-guidelines-for-outbreaks-in-residential-care-facilities)

Source: CDNA National Guidelines for the Prevention, Control and Public Health Management of COVID-19 Outbreaks in Residential Care Facilities in Australia (version 3.0).

2. COVID-19 management flow chart

Risk assessment for COVID-19



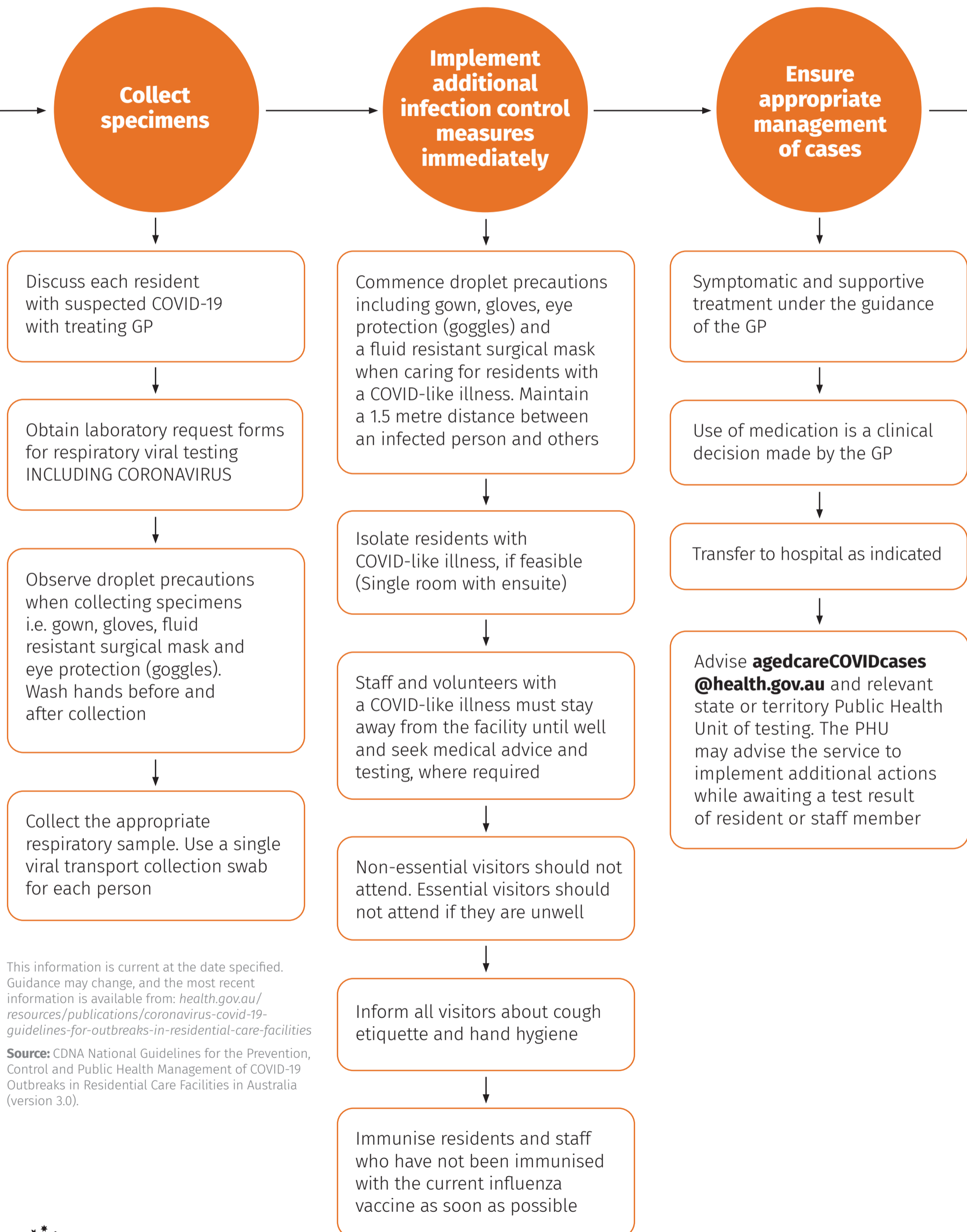
This information is current at the date specified. Guidance may change, and the most recent information is available from: [health.gov.au/resources/publications/coronavirus-covid-19-guidelines-for-outbreaks-in-residential-care-facilities](https://www.health.gov.au/resources/publications/coronavirus-covid-19-guidelines-for-outbreaks-in-residential-care-facilities)

Source: CDNA National Guidelines for the Prevention, Control and Public Health Management of COVID-19 Outbreaks in Residential Care Facilities in Australia (version 3.0).



3. COVID-19 management flow chart

Manage a suspected or confirmed case

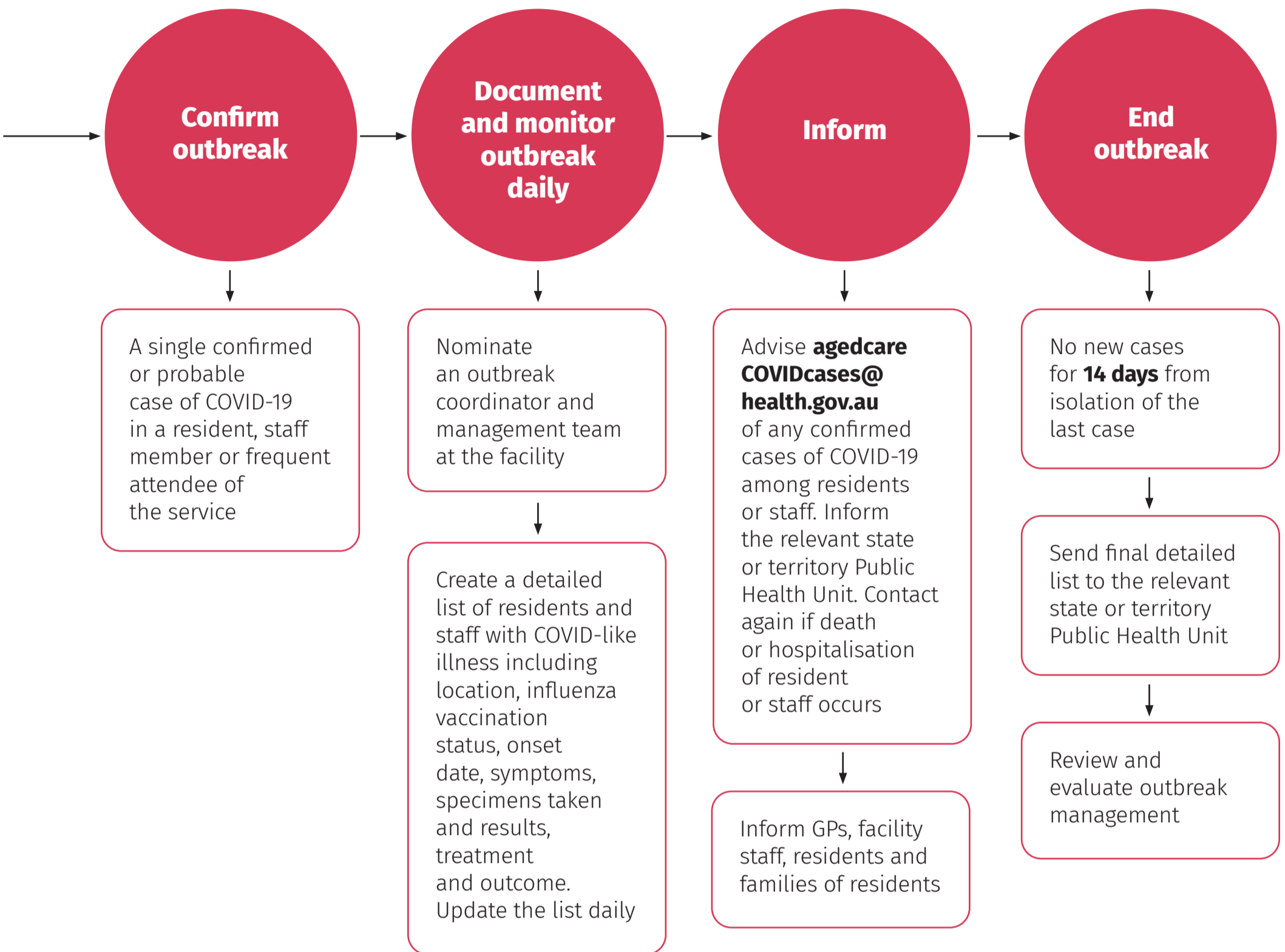


This information is current at the date specified. Guidance may change, and the most recent information is available from: [health.gov.au/resources/publications/coronavirus-covid-19-guidelines-for-outbreaks-in-residential-care-facilities](https://www.health.gov.au/resources/publications/coronavirus-covid-19-guidelines-for-outbreaks-in-residential-care-facilities)

Source: CDNA National Guidelines for the Prevention, Control and Public Health Management of COVID-19 Outbreaks in Residential Care Facilities in Australia (version 3.0).

4. COVID-19 management flow chart

Manage a suspected outbreak



This information is current at the date specified. Guidance may change, and the most recent information is available from: [health.gov.au/resources/publications/coronavirus-covid-19-guidelines-for-outbreaks-in-residential-care-facilities](https://www.health.gov.au/resources/publications/coronavirus-covid-19-guidelines-for-outbreaks-in-residential-care-facilities)

Source: CDNA National Guidelines for the Prevention, Control and Public Health Management of COVID-19 Outbreaks in Residential Care Facilities in Australia (version 3.0).

