



Provider registration

Sector snapshot from 1 November 2025

This snapshot

This report provides an overview of the types of services aged care providers deliver under the new [Aged Care Act 2024](#) (the Act).

A key change under the Act is that, as of 1 November 2025, all providers of funded aged care services must be registered in one or more of the 6 registration categories. The categories they are registered in are based on the service types they deliver.

The picture presented in this report provides an important baseline to measure how the sector changes over time.

Categories and service types

To deliver Australian Government-funded aged care services, an organisation or individual must be registered in at least one of the 6 registration categories, shown in the table. The service types in each category are defined in the [Aged Care Rules 2025](#). With the exception of Category 6, providers don't need to offer all service types within a category to be registered in that category.

Categories	Service types
Category 1: Home and community services	<ul style="list-style-type: none"> • Domestic assistance • Home maintenance and repairs • Meals • Transport
Category 2: Assistive technology and home modifications	<ul style="list-style-type: none"> • Equipment and products • Home adjustments
Category 3: Advisory and support services	<ul style="list-style-type: none"> • Hoarding and squalor assistance • Social support and community engagement
Category 4: Personal and care support in the home or community	<ul style="list-style-type: none"> • Allied health and therapy • Personal care • Nutrition • Therapeutic services for independent living • Home or community general respite • Community cottage respite • Care management • Restorative care management
Category 5: Nursing and transition care	<ul style="list-style-type: none"> • Nursing care • Assistance with transition care
Category 6: Residential care	<ul style="list-style-type: none"> • Residential accommodation • Residential everyday living • Residential clinical care • Residential non-clinical care

Provider registration

How information helps us regulate

The Aged Care Quality and Safety Commission (Commission) uses risk surveillance to monitor all providers and workers. We collect information from older people, providers, carers, aged care advocates and other agencies. By analysing this information, we can build risk profiles for each provider and worker. This means we can identify which providers or workers we need to supervise more closely.

Building risk profiles helps us to:

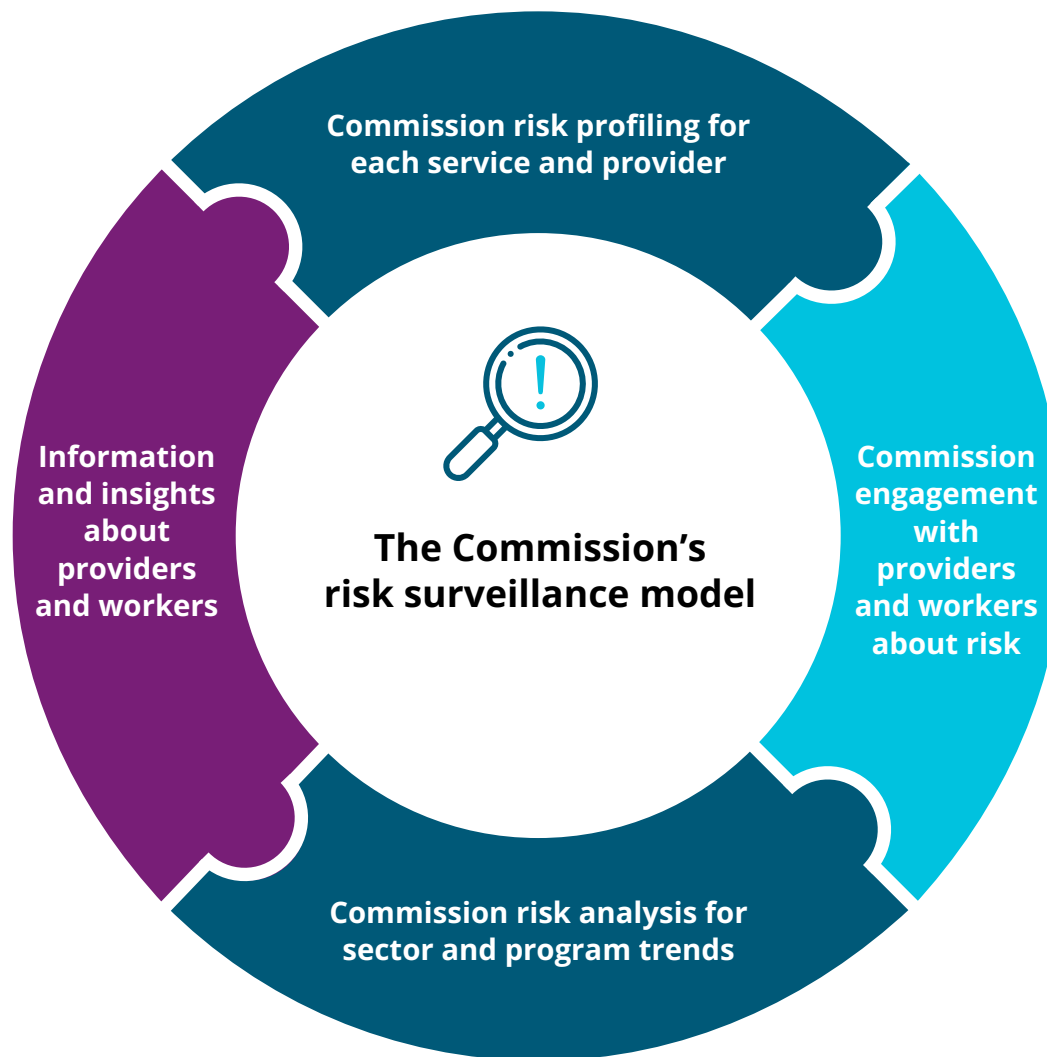
- focus on monitoring the providers and workers who need it the most
- reduce our monitoring of providers and workers who meet their obligations and conditions of registration.

The more we know about providers, the better we can:

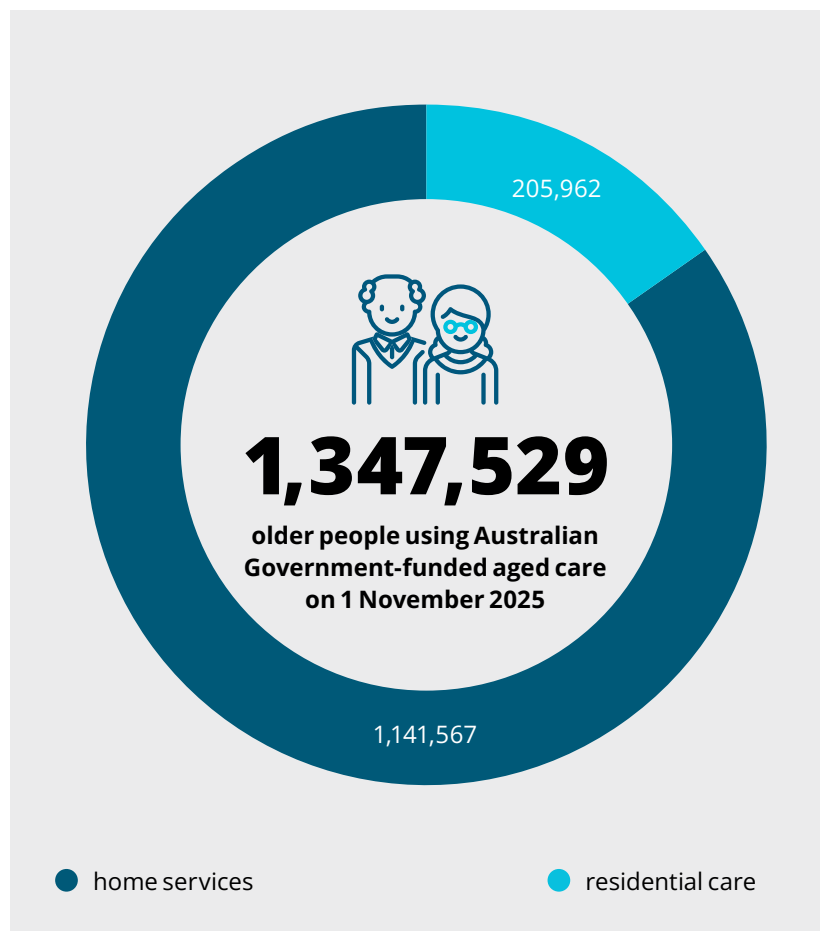
- regulate them
- support them to deliver safe, quality and person-centred care
- make sure our approach is in proportion to the risk faced by older people.

You can find more information on how we regulate aged care in our [Regulatory Strategy 2025–26](#).

When our Regulatory Strategy for the 2026–27 financial year is released our focus and priorities may change.



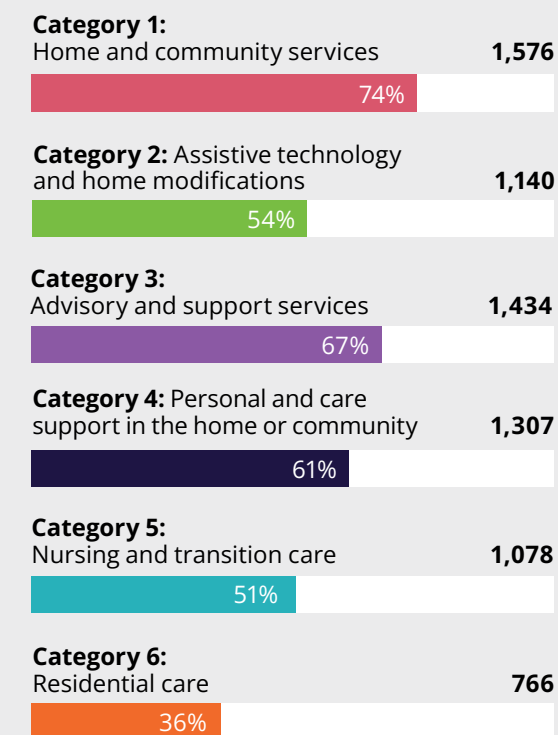
Older people receiving care and the aged care market



Older person overview as of 1 November 2025.



Total providers by registration category



Provider overview as of 1 November 2025.

Note 1: Most providers are registered in multiple categories.
 Note 2: Providers who provide services in multiple categories are counted in each category in the figure above.

Provider registration

Providers by their highest registration category

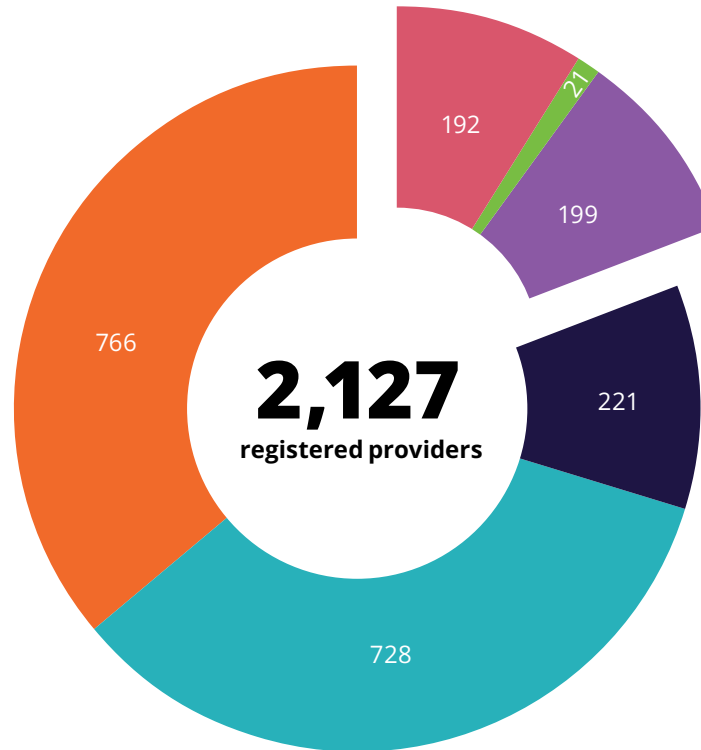
The impact of categories on regulatory approach

We monitor complaints and incidents of providers in all categories, and all providers are supervised.

If a person or organisation is applying to register in Category 4 or above, we audit them against the strengthened [Aged Care Quality Standards](#). We also audit providers when they apply to renew their registration in these categories.

1,715 | Category 4
Category 5
Category 6

81% of the **2,127** providers will be audited against the strengthened Aged Care Quality Standards.



412 | Category 1
Category 2
Category 3

19% of the **2,127** providers are registered in Category 3 or below.

These providers are [Commonwealth Home Support Program \(CHSP\) providers](#).

Support at Home providers

Providers who receive [Support at Home \(SaH\)](#) funding must be registered in Category 4 with the service type 'care management'.

Providers registered to deliver each service type

Category 1: 1,576 providers

Domestic assistance

1,242 – 79%

Home maintenance and repairs

1,244 – 79%

Meals

1,334 – 85%

Transport

1,311 – 83%

Category 2: 1,140 providers

Equipment and products

1,063 – 93%

Home adjustments

1,129 – 99%

Category 3: 1,434 providers

Hoarding and squalor assistance

1,055 – 74%

Social support and community engagement

1,431 – 100%

Category 4: 1,307 providers

Allied health and other therapy

1,168 – 89%

Personal care

1,132 – 87%

Nutrition

1,042 – 80%

Therapeutic services for independent living

1,048 – 80%

Home or community general respite

1,182 – 90%

Community cottage respite

1,057 – 81%

Care management

1,042 – 80%

Restorative care management

1,042 – 80%

Category 5: 1,078 providers

Nursing care

1,078 – 100%

Assistance with transition care

49 – 5%

Category 6: 766 providers*

Residential accommodation

Residential everyday living

Residential clinical care

Residential non-clinical care

766 – 100%

* Category 6 providers need to offer all service types in residential care.

Note 1: Many providers offer more than one service type. Providers are counted in each service type that they have been registered to provide in the figures on this page.

Note 2: At the time of this snapshot (1 November 2025), some providers may not have started delivering the services that their registrations indicate they will provide.

- **Category 1:** Home and community services
- **Category 2:** Assistive technology and home modifications
- **Category 3:** Advisory and support services
- **Category 4:** Personal and care support in the home or community
- **Category 5:** Nursing and transition care
- **Category 6:** Residential care

Provider registration

How many categories providers are registered in

- 1,432 providers (67% of all providers) are registered in 2 or more categories.
- 726 providers (34%) are registered in 5 categories.
- 695 providers (33% of all providers) are registered in one category.

Single category



Two categories



Three categories



Four categories



Five categories



Six categories



Breakdown of providers registered in one category

● Category 6

395

● Category 1

192

● Category 3

62

● Category 4

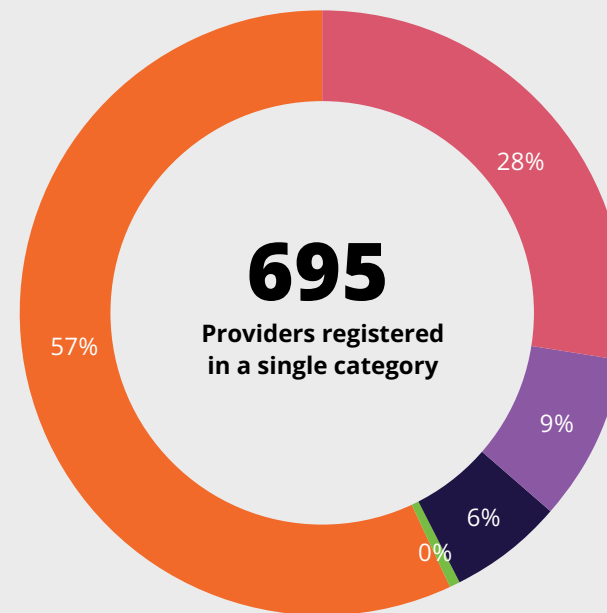
43

● Category 2

3

● Category 5

0



Of the 695 providers registered to provide services in one category only, 395 of those providers (57% of one-category providers) are in Category 6: Residential care.

On 1 November 2025, there were 257 providers registered in categories 1, 2 or 3 only. These were all CHSP providers that were deemed (automatically transferred)

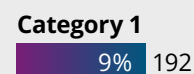
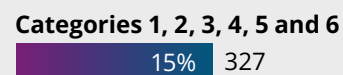
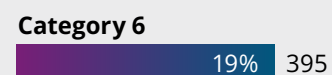
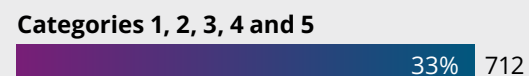
into registration categories based on the services they deliver or are required to deliver under their funding agreement. They don't include SaH providers, which must be registered in Category 4.

There were no providers registered only in Category 5: Nursing and transition care.

Provider registration

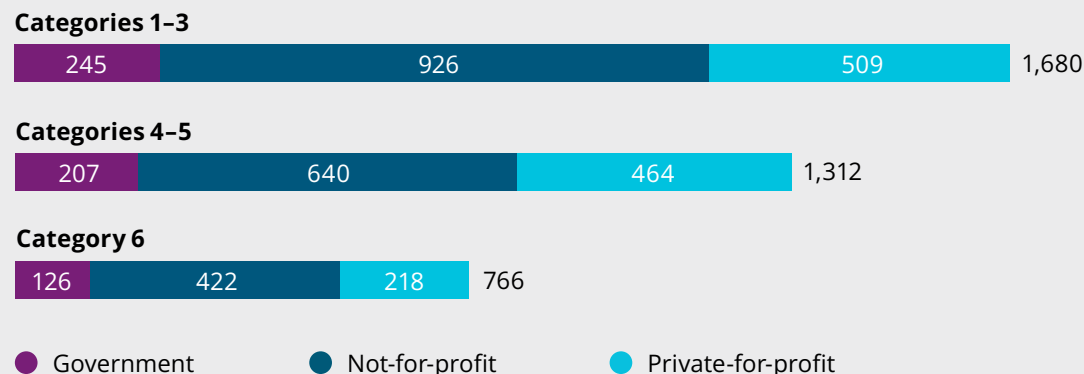
5 most common registration category combinations

The most common combination was for a provider to be registered in categories 1, 2, 3, 4 and 5. A third of providers have registrations in all 5 of those categories.



Providers by ownership type

In categories 1 to 3, 55% of providers are not-for-profit, and 30% are private-for-profit. In Category 6, 55% of providers are not-for-profit.



Note: Registered providers can provide service types in multiple categories. This means they can be counted more than once in the chart above.

Associated providers

Associated providers deliver funded aged care services on behalf of a registered provider. Registered providers need to keep specific information about their associated providers and report some of it to us.

Registered providers are responsible for ensuring their associated providers comply with the obligations in the Act and Aged Care Rules 2025.

The Commission will provide more information on associated providers delivering services across the sector as it becomes available.



Resources

If you would like to know more, here are some helpful links.

[Aged Care Provider Requirements Search](#)

[Aged care service requirements](#)

[Regulatory Strategy 2025–26](#)

[Compliance and Enforcement Policy](#)

[Provider registration](#)

[Provider Registration Policy](#)

[Provider handbook](#)

[Audit guidance and resources](#)

[Renewal of registration audit guide](#)

[Variation of registration audit](#)

[Getting ready for provider registration: applications, audits and fees explained \(Webinar, 7 October 2025\)](#)

[Cost recovery](#)

[Fee Calculators](#)

[Registration fees](#)


Notes on data

We take point-in-time sector data from live Commission systems. Reported figures can change as we update the records in our database.


Data on provider registration, registration categories, and service type was correct on 1 November 2025. We extracted it from the Provider Register on 7 November 2025.

Data on older persons receiving government-funded aged care services was correct on 31 October 2025. We extracted it from the Service to Provider Association Table, from the Department of Health, Disability and Ageing data portal, on 15 December 2025 (from data archived on 31 October 2025).

In the spirit of reconciliation, the Aged Care Quality and Safety Commission acknowledges the Traditional Custodians of Country throughout Australia and their connections to land, water and community. We pay our respect to their Elders, past, present and emerging and extend that respect to all Aboriginal and Torres Strait Islander peoples.

 1800 951 822

 agedcarequality.gov.au

 Aged Care Quality and Safety Commission
GPO Box 9819, in your capital city

Find this resource online

agedcarequality.gov.au/news-publications/reports/provider-registration-sector-snapshot

